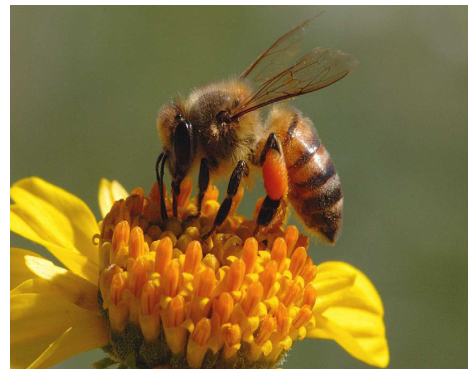


SuperBoost

& Other Bee Products



SuperBoost stimulates foraging, aids in spring build-up and increases honey production.

SuperBoost

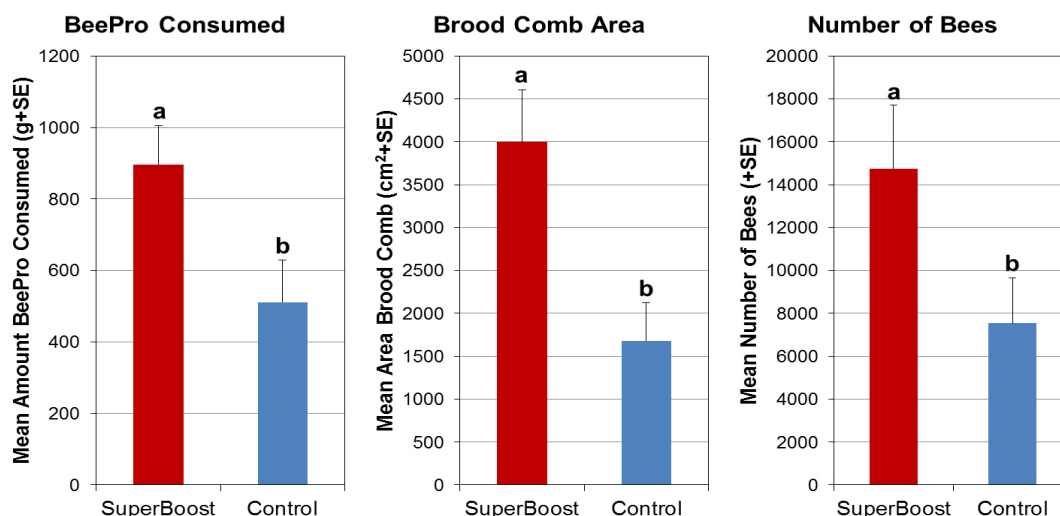


Honey Bee Brood Pheromone is produced in the salivary glands of larvae. The brood pheromone stimulates worker bees to forage by indicating how many larvae the hive needs to support. The amount of brood pheromone present in a hive directly affects the amount of foraging of pollen and nectar by workers and the rate of egg laying by the queen.

SuperBoost is a synthetic version of the honey bee brood pheromone. The result of over 7 years of research and development, SuperBoost is a 10-component blend of synthetic pheromones with a food grade anti-oxidant to stabilize four of the fatty acid components. SuperBoost encourages a hive to become more productive to support the increased number of larvae they perceive to be present.

SuperBoost has been scientifically demonstrated to promote:

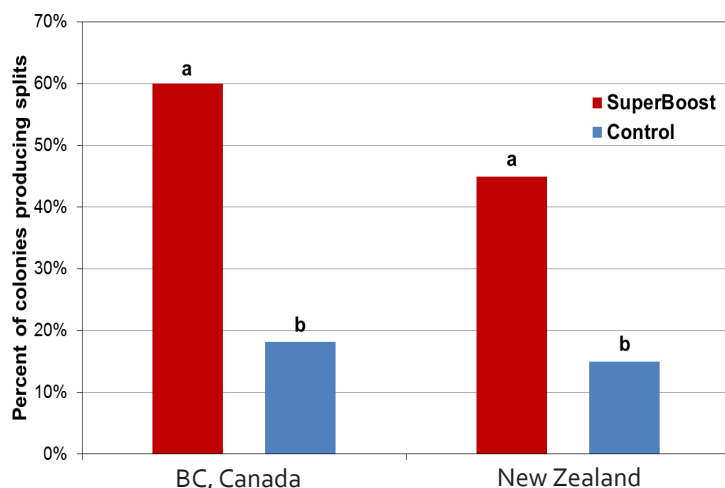
- pollen collection
- consumption of pollen substitute diet during spring build-up and fall feeding
 - establishment of brood comb
- increase in the number of workers
 - more splits
- honey production



After two five-week treatments on sets of 12 colonies during spring build-up, 11 control colonies and 10 treated colonies had survived. Compared to controls, surviving colonies treated with SuperBoost had consumed 75.5% more BeePro®, had 2.4x greater brood comb area, and 2.0x more bees.

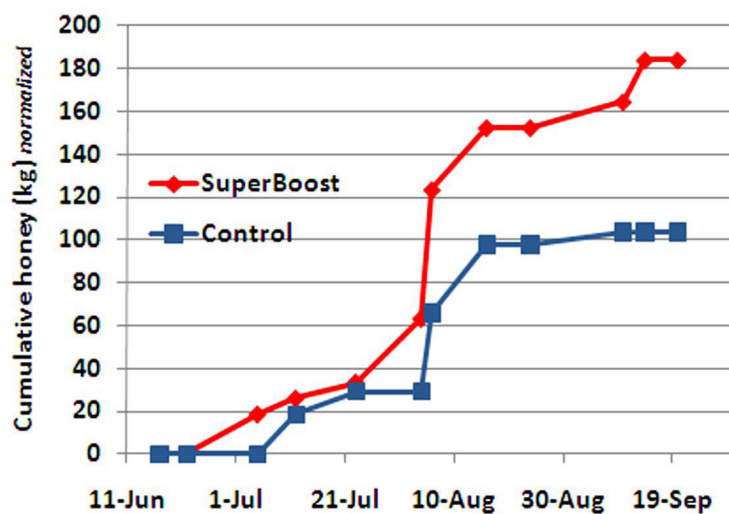
SuperBoost

**Percent of colonies producing splits:
SuperBoost versus untreated control**



In both BC and New Zealand, significantly more colonies treated with SuperBoost during spring build-up produced splits than untreated colonies.

**Cumulative honey yield:
SuperBoost versus untreated control**



Colonies treated twice with Superboost at the start of nectar flow in 2010 yielded 78% more honey than untreated controls.

When do I use SuperBoost?

- Use during spring build-up feeding of pollen substitute diet in late winter;
- Use in spring and summer to assist with package bee colony establishment and to increase honey production;
- Use in established colonies just prior to nectar flow to increase honey production;
- Use in late summer to early fall to promote colony vigor when supplementary diet is fed to bees prior to overwintering.

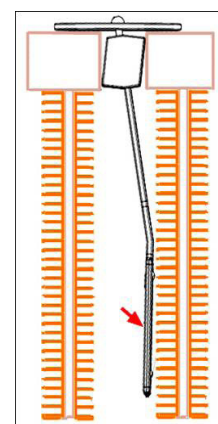


SuperBoost Hanger

How much SuperBoost do I need?

Each SuperBoost device will last for five weeks.

- Spring build-up feeding: 2 treatments;
- Package bee establishment and honey production in spring: 2 treatments;
- Honey production by established colonies: 2 treatments;
- Fall feeding: one treatment.



SuperBoost installed between two frames - illustrating how the active pheromone surface of the membrane remains exposed in the gap between combs.

Other Bee Products



SwarmCatch

Contains Nasonov pheromone. Use to recover swarms and straggler bees.



PseudoQueen

Contains queen mandibular gland pheromone. Use to supplement a weak queen or to replace a dead queen until a new one can be found.



Wasp Bag Trap

Reusable trap can be hung or can stand alone. Lure contains a blend of natural compounds. When placed next to a hive, it catches marauding yellowjacket wasps - and almost no honey bees.



FruitBoost

Contains queen mandibular gland pheromone. When sprayed on flowering crops, it induces honey bees to forage more vigorously. Used as a spray by growers to enhance pollination.



Varroa Trap (Mite Boards)

A sticky piece of cardboard with a screen cover to allow mites to fall through and prevent bees from contacting the sticky surface. Helps make treatment decisions easier by determining the size of varroa populations.

To order visit: www.contech-inc.com or call 1.250.413.3250